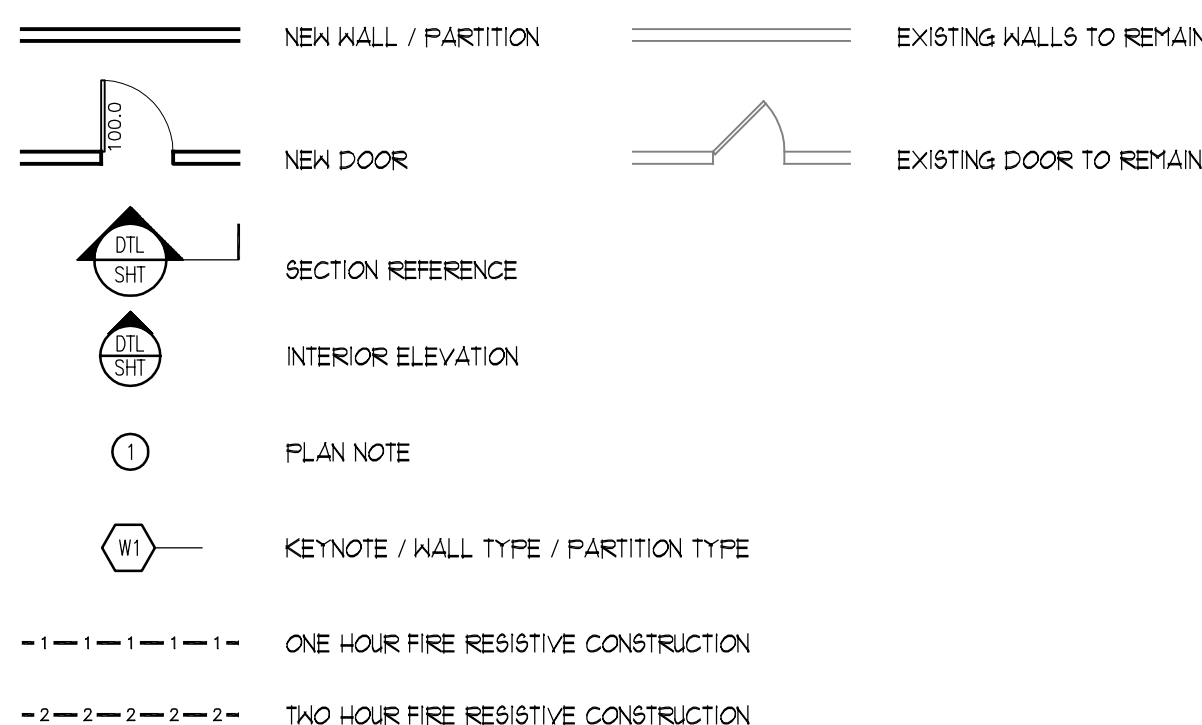


**FLOOR PLAN - SYMBOLS LEGEND**

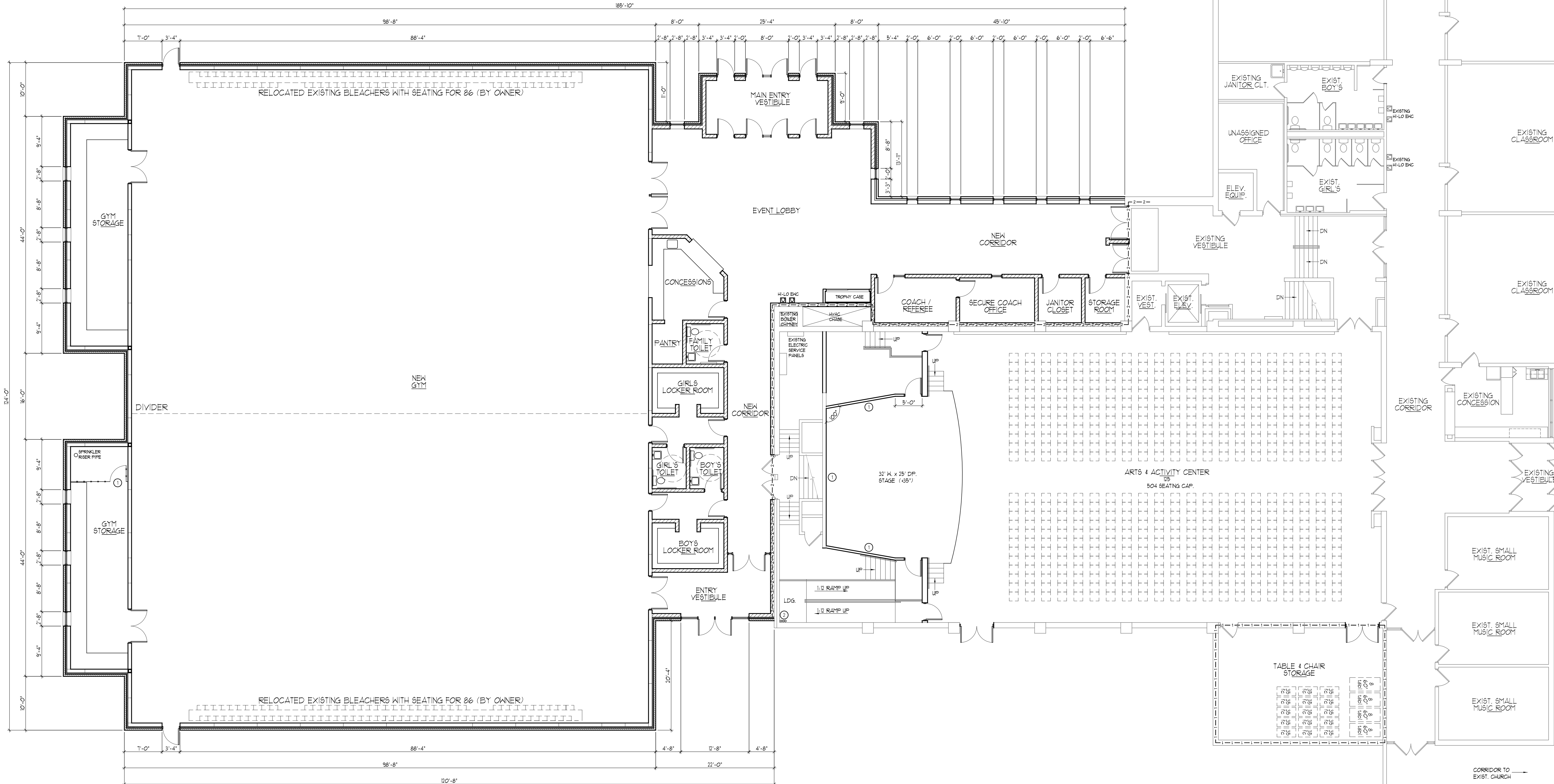


**FLOOR PLAN - GENERAL NOTES**

- DIMENSIONS ON FLOOR PLAN ARE BASED ON FACE OF FINISHED WALL TO FACE OF FINISHED WALL (NOMINAL).
- VERIFY ALL DIMENSIONS AND CONDITIONS AT JOB SITE. PORTIONS OF EXISTING CONSTRUCTION MAY HAVE BEEN REMOVED BY OWNER.
- MAINTAIN CONTINUOUS UTILITY SERVICE TO ALL SPACES IN THE BUILDING NOT AFFECTED BY THIS WORK. COORDINATE WITH OWNER ANY DISRUPTION IN SERVICES REQUIRED TO PERFORM WORK OR TO MODIFY EXISTING PIPING, DUCTWORK OR ANY ASSOCIATED EQUIPMENT.
- REFER TO SHEET 8XX FOR ROOM FINISH SCHEDULE AND NOTES.
- REFER TO SHEET 8XX FOR DOOR SCHEDULES, DOOR TYPES, AND NOTES.

**FLOOR PLAN NOTES**

- PROVIDE (2) LAYERS OF 1/2" THK GYPSUM BOARD FULL HT. ON SIDE OF WALL FACING STAGE ONLY. (NOTE: GYPSUM BOARD IS TO BE GLUED & SCREWED TO WALL STUDS)
- EDIT NOTE.
- EDIT NOTE.



**GYM ADDITION FLOOR PLAN**

1/8"=1'-0"

